

Instructions for Use

Life Science Kits & Assays



innuSPEED Lysis Tubes

1 Product specifications

1.1 Starting material:

- Up to 20 mg (RNA) or 50 mg (DNA) tissue sample
- Up to 100 mg plant sample
- Up to 100 mg soil
- Pelleted cells of bacteria and/ or fungi
- 200–400 mg (or 200–400 µl of liquid) stool sample
- Size of starting material (depends on consistence):
5 x 5 mm (soft)/ 2.5 x 2.5 mm (medium hard) or 1.5 x 1.5 mm (very hard)

1.2 Time for lysis

- Depends on starting material, approx. 2 to 10 minutes

2 Intended use

The innuSPEED Lysis Tubes include a variety of 0.5 and 2.0 ml reaction vessels with skirted bases and screw lids. Prefilled with beads in various sizes, materials and quantities, innuSPEED Lysis Tubes are ideally suited for homogenizing an exceptionally wide variety of starting materials (e.g. plants, tissues, cells, etc.).

2.1 Quality Data

Reproducibility and stability was tested by subsequent DNA extraction experiments.

2.2 Instruments

The innuSPEED Lysis Tubes were tested successfully with following homogenizers:

Homogenizer	Manufacturer
SpeedMill PLUS	Analytik Jena AG

Product and order number

3 Product and order number

innuSPEED Lysis Tube	Order-no.	Order -no. xxx for (...) rxn		
		50 rxn	100 rxn	250 rxn
A	845-CS-1000xxx	050	100	250
B	845-CS-1030xxx	050	100	250
C	845-CS-1040xxx	050	100	250
D	845-CS-1050xxx	050	100	250
E	845-CS-1070xxx	050	100	250
F	845-CS-1090xxx	050	100	250
G	845-CS-1130xxx	050	100	250
H	845-CS-1100xxx	050	100	250
I	845-CS-1110xxx	050	100	250
J	845-CS-1120xxx	050	100	250
P	845-CS-1020xxx	050	100	250
S	845-CS-1060xxx	050	100	250
T	845-CS-1190xxx	050	100	250
W	845-CS-1140xxx	050	100	250
X	845-CS-1150xxx	050	100	250
Y	845-CS-1160xxx	050	100	250
Z	845-CS-1170xxx	050	100	250
		6 rxn	12 rxn	24 rxn
Q	845-CS-1180xxx	006	012	024

4 Storage conditions

The innuSPEED Lysis Tubes are shipped and stored at ambient temperature (15 °C to 30 °C). When stored as recommended, the innuSPEED Lysis Tubes are stable until the expiration date printed on the kit label.

5 Safety precautions

The kit shall only be handled by educated personnel in a laboratory environment. The compliance with the specified procedure is absolutely mandatory when performing this assay.

Reagents should be stored in their original containers at the indicated temperatures. Do not replace individual components with those from different batches or kits. Note the indicated expiration dates.

Do not eat, drink or smoke while performing the assay.

Wear protective clothing and safety gloves.

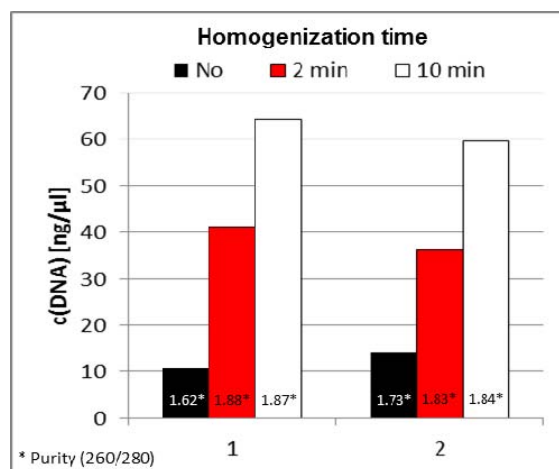
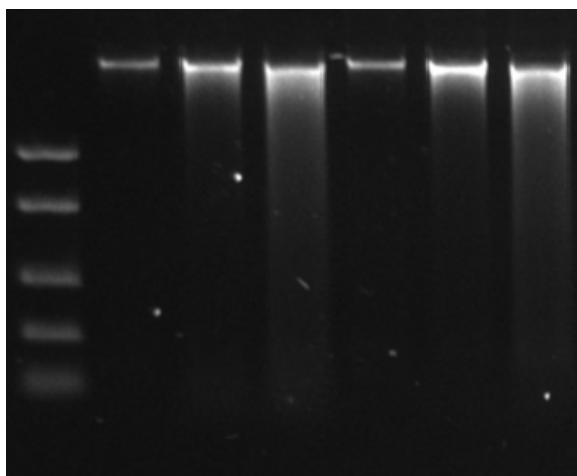
All samples and test materials should be handled and disposed of as infectious material, in accordance with regulatory requirements.

Reagent containers that have not come in contact with potentially infectious material may be disposed of along with ordinary laboratory waste.

6 Delivered components

	Bead material and size			Tube size [ml]	Lid color
	Glass [μm]	Ceramics [mm]	Steel [mm]		
Lysis Tube A	-	1.4 - 1.6	-	2.0	nature
Lysis Tube B	90 - 150	-	-	2.0	blue
Lysis Tube C	-	0.4 - 0.6	-	0.5	violet
Lysis Tube D	90 - 150	-	-	0.5	nature
Lysis Tube E	-	2.4 - 2.8	-	2.0	orange
Lysis Tube F	-	-	3 x 4.7	0.5	yellow
Lysis Tube G	90 - 150	-	-	2.0	nature
Lysis Tube H	-	-	8 x 3.5	0.5	violet
Lysis Tube I	-	-	5 x 3.5	0.5	red
Lysis Tube J	-	-	5 x 4.7	2.0	blue
Lysis Tube P	-	2.4 - 2.8	-	0.5	green
Lysis Tube Q	-	-	Mandrel	2.0	red
Lysis Tube S	-	0.4 - 0.6	-	2.0	yellow
Lysis Tube T	-	1.4 - 1.6	-	0.5	pink
Lysis Tube W	-	1.4 - 1.6	5 x 3.5	2.0	red
Lysis Tube X	-	0.4 - 0.6 1.4 - 1.6	-	2.0	white
Lysis Tube Y	90 - 150	-	5 x 4.7	2.0	brown
Lysis Tube Z	90 - 150	-	5 x 3.5	2.0	black

8 Application example



Extraction of DNA from *S. cerevisiae* using SpeedMill PLUS. Different homogenization times were tested with innuSPEED Lysis Tube S.

sample	Homogenization time	Yield [ng/μl]	Ratio (260 nm/280 nm)
1a	0 min	10.89	1.62
2a		14.22	1.71
1b	2 min	41.13	1.88
2b		36.27	1.83
1c	10 min	64.31	1.87
2c		59.66	1.84

9 Related Products

Name	Amount	Order No.
Additional products for nucleic acid purification		
innuPREP Proteinase K	30 mg	845-CH-0010030
innuPREP Bacteria Lysis Booster	50 rxn	845-KA-1000050
Kits for nucleic acid purification		
innuPREP RNA Mini Kit	10 rxn	845-KS-2040010
	250 rxn	845-KS-2040250
innuPREP DNA Mini Kit	10 rxn	845-KS-1040010
	250 rxn	845-KS-1040250
Kits for nucleic acid purification including Lysis Tubes		
innuSPEED Bacteria/ Fungi DNA Kit	50 rxn	845-KS-1510050
innuSPEED Tissue RNA Kit	50 rxn	845-KS-2540050
innuSPEED Soil DNA Kit	50 rxn	845-KS-1580050
innuSPEED Plant RNA Kit	50 rxn	845-KS-2560050
Equipment		
SpeedMill PLUS	220 V	845-00007-3

Publication No.: HB_CS-1XXX_e_170830

Issue: 10/2017

This documentation describes the state at the time of publishing. It needs not necessarily agree with future versions. Subject to change!

Expression and further use permitted with indication of source. © 2017 Analytik Jena AG,
AJ Innuscreen GmbH

Manufacturer:

AJ Innuscreen GmbH
Robert-Rössle-Strasse 10
13125 Berlin · Germany

Distribution/Publisher:

Analytik Jena AG
Konrad-Zuse-Strasse 1
07745 Jena · Germany

Phone +49 3641 77 70
Fax +49 3641 77 9279
info@analytik-jena.com
www.analytik-jena.com